



MUST SEE TRAVEL GUIDE



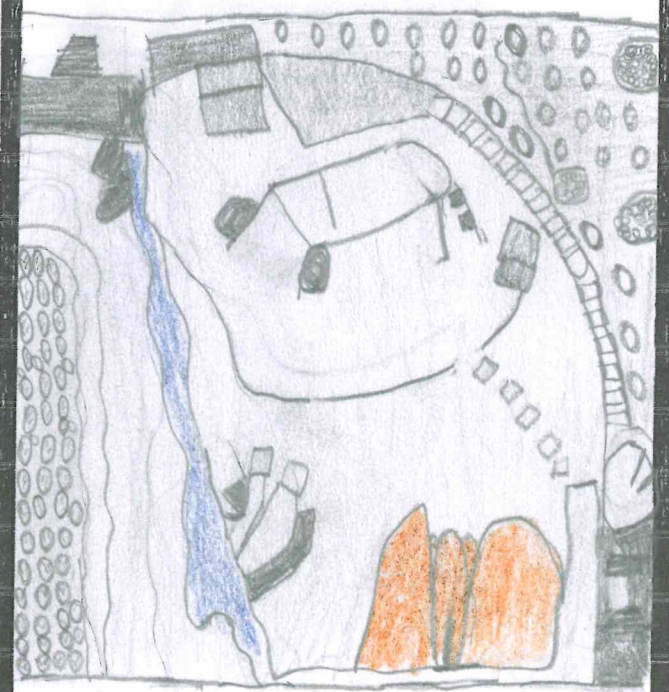
Your School Name : 11th Primary school

Your Name : Athanasia

The original



The copy



EXPLANATION

MYCENAE

During the 2nd millennium BC, Mycenae was one of the largest centers of Greek civilization, being a strong military fortress that dominated most of southern Greece



MUST SEE TRAVEL GUIDE



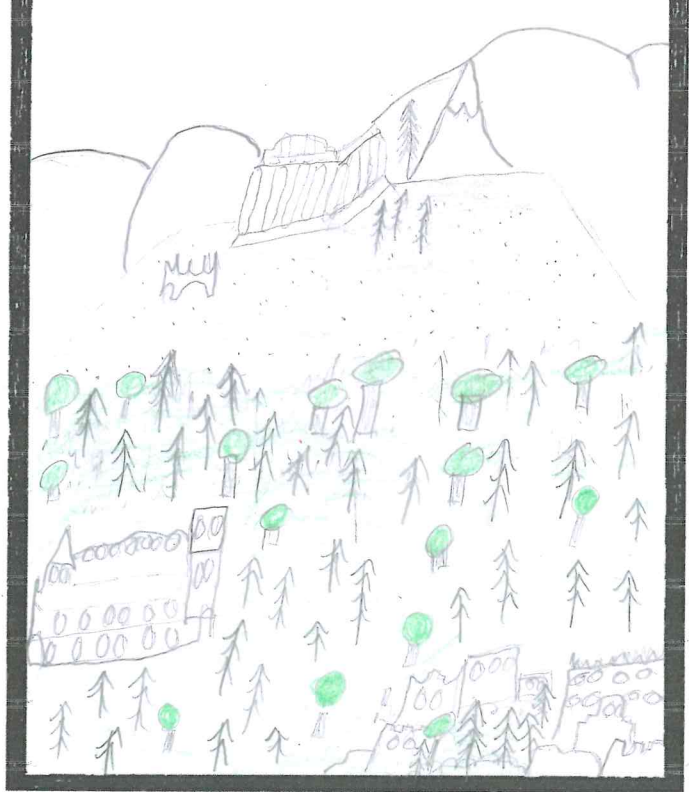
Your School Name : 11th Primary School

Your Name : Maria

The original



The copy



EXPLANATION

The **Acropolis** of Athens is a rocky hill 157 m above sea level and about 70 m above the level of the city of Athens. The top is trapezoidal in shape 300 m long and 150 m wide. The hill is inaccessible on all sides except the west, where the fortified entrance is located, decorated with the glorious Propylaea.



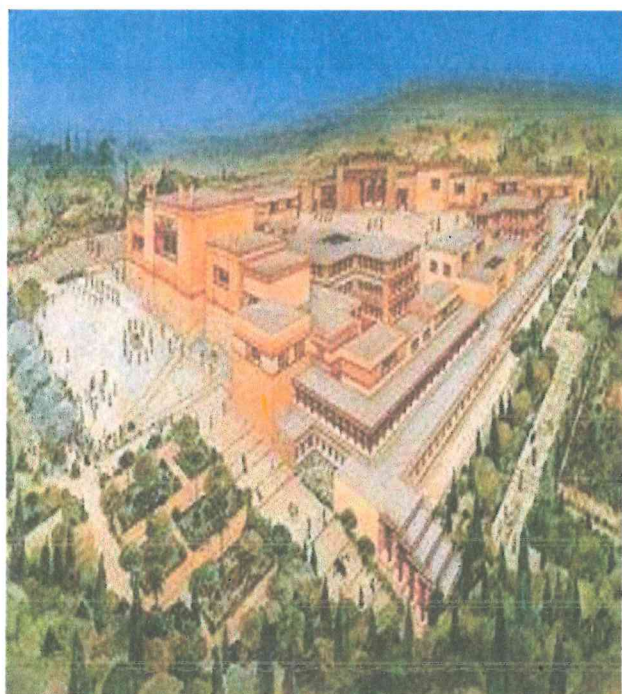
MUST SEE TRAVEL GUIDE



Your School Name : 11th Primary School

Your Name : Valia

The original



The copy



EXPLANATION

The Minoan palace is the main visitable area of **Knossos**, an important city in antiquity, with continuous life from the Neolithic years to the 5th c. It is built on the hill of Kefala, with easy access to the sea and the interior of Crete. According to tradition, it was the seat of the wise king Minos.

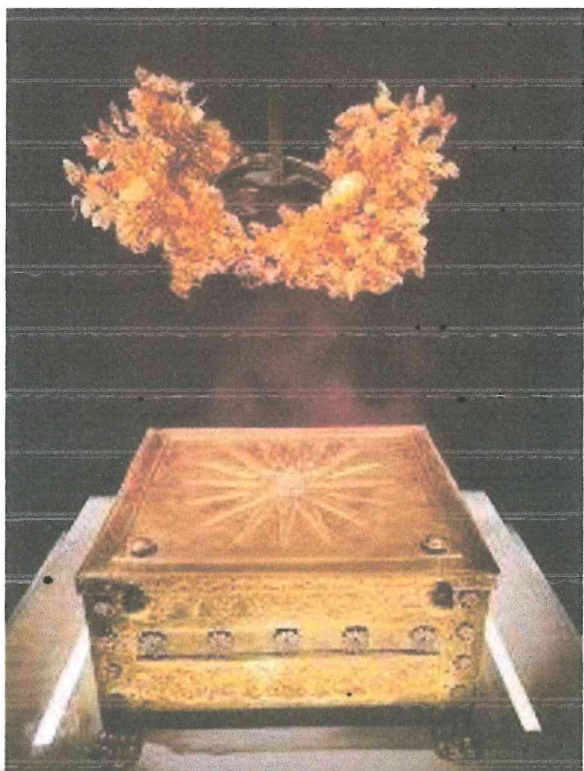


MUST SEE TRAVEL GUIDE



Your School Name : 11th Primary School
Your Name : Zoi

The original



The copy



EXPLANATION

VERGINA

Vergina is a small town in Macedonia, in the prefecture of Imathia. tombs belonged to King Philip II, father of Alexander the Great.



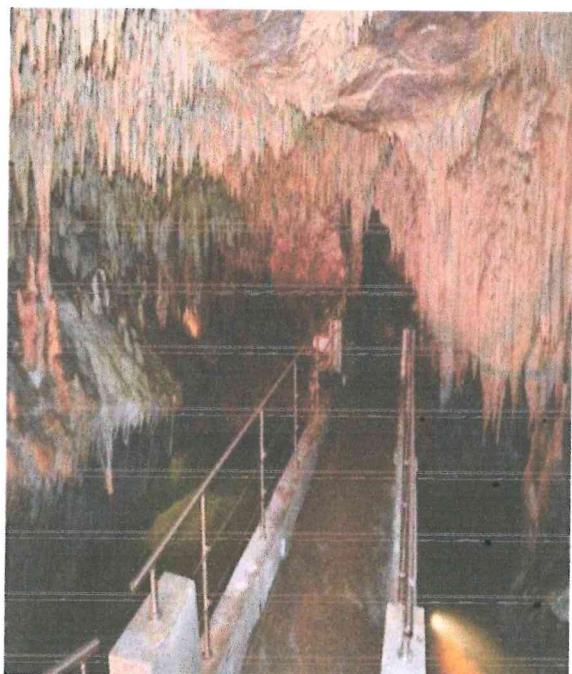
MUST SEE TRAVEL GUIDE



Your School Name : 11th Primary School

Your Name : Panagiotis

The original



The copy



EXPLANATION

THE DRAGON CAVE - KASTORIA

According to the tradition and narration of the folklorist D. Giannousis (Acropolis, 11-7-54), many, many years ago, the cave was a gold mine guarded by a dragon. The monster breathed and released flames and poisonous vapors from its mouth to anyone who dared to be on its doorstep.



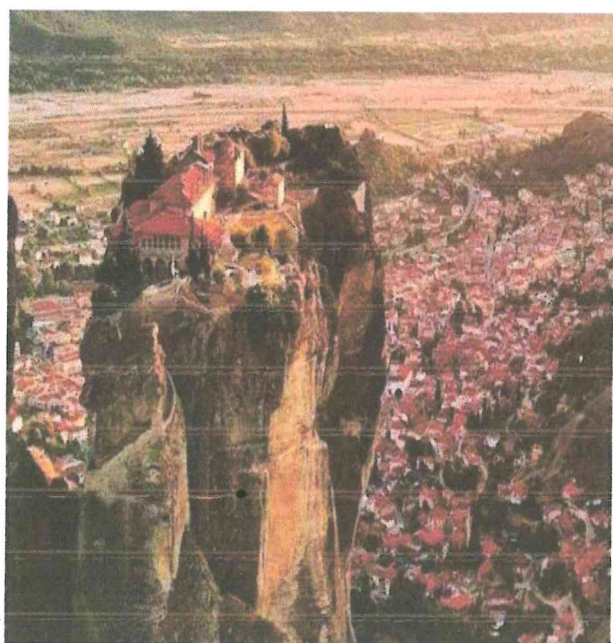
MUST SEE TRAVEL GUIDE



Your School Name : 11th Primary School

Your Name : Anastasia

The original



The copy



EXPLANATION

METEORA

Meteora is a complex of dark sandstone rocks that rise outside Kalampaka in Thessaly, near the first hills of Pindos and Hassia. The monasteries of Meteora, which are built on the tops of some of the rocks, are today the second most important monastic complex in Greece, after Mount Athos



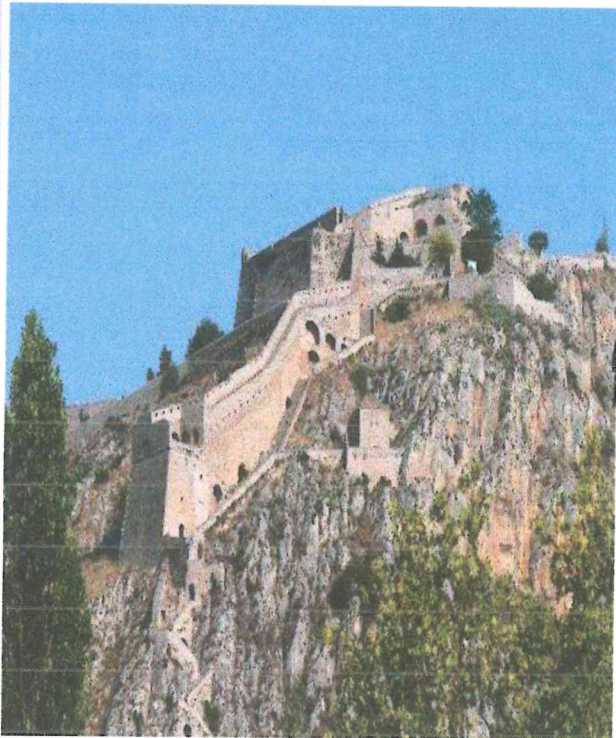
MUST SEE TRAVEL GUIDE



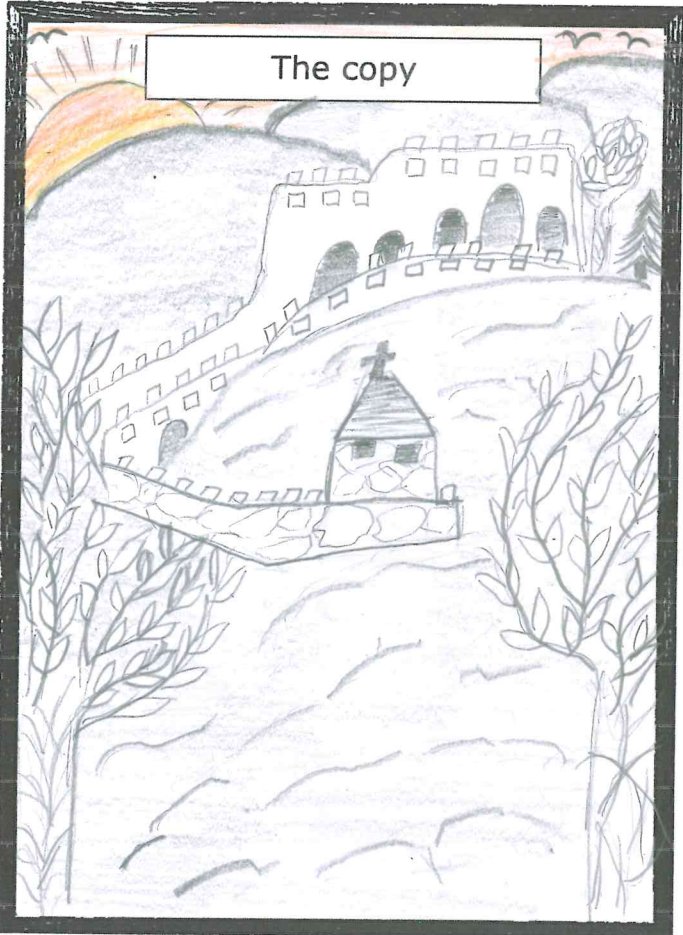
Your School Name : 11th Primary School

Your Name : Maria

The original



The copy



EXPLANATION

Palamidi is a fortress in Nafplio which was built in 1687 by the Venetians

During the Greek Revolution of 1821 the Turks fortified themselves in Palamidi but on November 30, 1822 the Greeks occupied it after a battle.

The areas of Palamidi and Akronafplia are a protected habitat of Natura 2000 with an area of 3.7 sq.km.



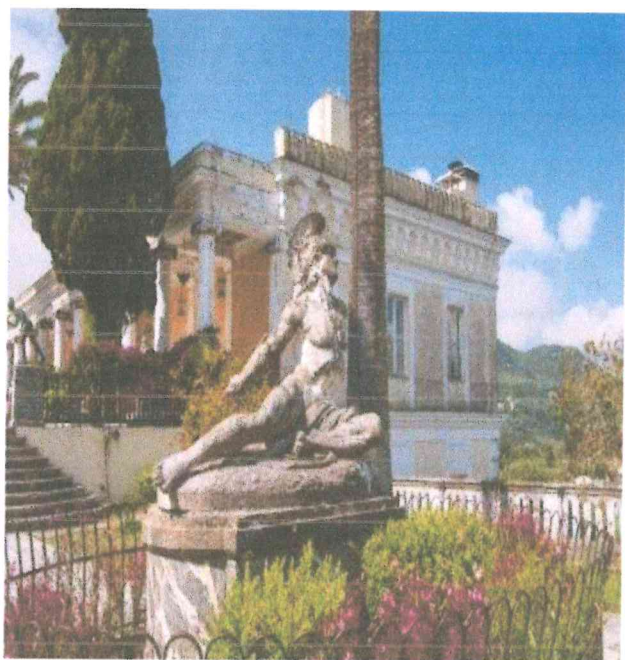
MUST SEE TRAVEL GUIDE



Your School Name : 11th Primary School

Your Name : Maria

The original



The copy



EXPLANATION

The beautiful **Achilles** is located next to the mountain village of Gastouri, it is the palace built by the Empress of Austria Elizabeth who became known as the sad Queen Sissy. The decoration of Achilles was made by Elizabeth herself and reflects her love for Hellas